

SPECIFICATION

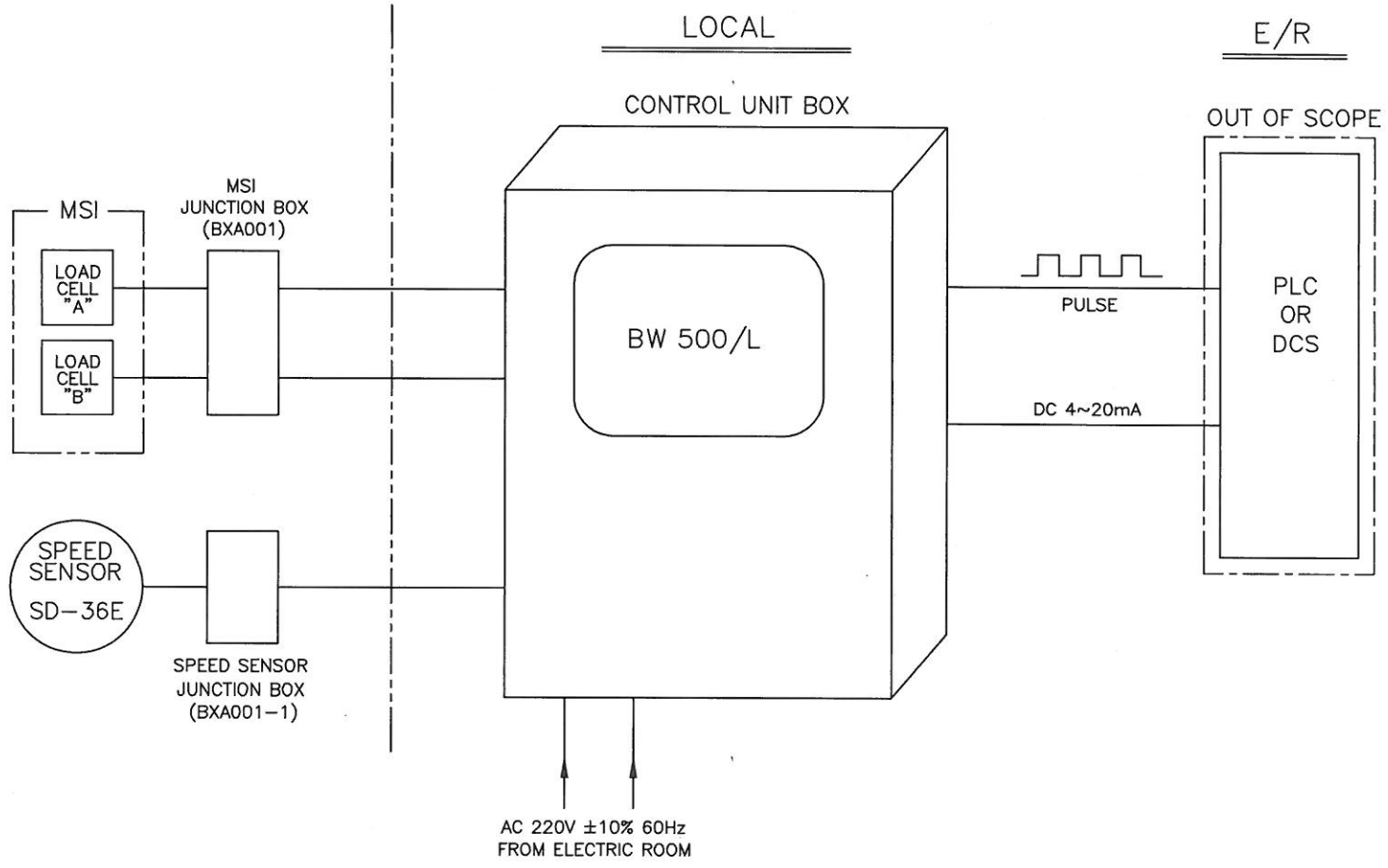
BELT SCALE

WEIGHING EQUIPMENT

| TAG. NO | | |
|--------------------|-----------------------------|---|
| SERVICE CONDITION | DESIGN RATE | |
| | BELT WIDTH | 600~1300MM |
| | BELT SPEED | |
| | TEMPERATURE (°C) | — |
| SINGLE IDLER SCALE | ACCURACY | ±0.5% |
| | CONVEYOR INCLINE | ±20°FROM HORIZONTAL. FIXED INCLINE UP TO ±30° WITH REDUCED ACCURACY |
| | NUMBER OF LOAD CELL | 2EA |
| | LOAD CELL EXCITATION | 10VDC(NOR.)/15VDC(MAX.) |
| | LOAD CELL OUTPUT | 0 ~ 2mV/V |
| | MODEL | MSI |
| CONTROL UNIT | POWER | 100~230Vac ±15%, 50/60Hz |
| | ENCLOSURE | NEMA 4X/IP65 |
| | INPUT | LOAD CELL - 0~45mV SPEED SENSOR - 0~5V(LOW) 0~15V(HIGH) |
| | OUTPUT | 0~20mA or 4~20mA , 2REMOTE TOTALIEER |
| | MODEL | CONTROL BOX WITH BW500L |
| SPEED SENSOR | TYPE | ROTARY PROXIMITY |
| | POWER SUPPLY | DC 12 TO 24V |
| | PULSE PER SENSOR REVOLUTION | 6/REVOLUTION(10 pulses/m), |
| | DRIVE PULLEY DIAMETER | 191mm |
| | ENCLOSURE | IP67 |
| | OUTPUT | NPN OPEN COLLECTOR |
| | MODEL | SD-36E / SEOJIN INSTECH |
| TEST WEIGHT | 18LB(QT'Y) | YES |
| JUNCTION BOX | MAT'L | ADC |
| | ENCLOSURE | IP67 |
| | MODEL | BXA001/BXA001-1 / SEOJIN INSTECH |

| REV. NO | DATE | DESCRIPTION | PREPARED | CHECKED | APPROVED |
|---------|------|-------------|----------|---------|----------|
| | | | | | |

| NO. | DATE | REVISIONS & DESCRIPTION | SIGNATURE | |
|-----|------|-------------------------|-----------|----------|
| | | | CHECKED | REVIEWED |
| △ | - | - | | |
| △ | | | | |



| | | | |
|----------------|-------------------|-----------|------|
| CUSTOMER | - | | |
| PROJECT | - | | |
| TITLE | BELT SCALE SYSTEM | | |
| MANUFACTURER | | | |
| SCALE | | EXP. CODE | 0000 |
| Work Order No. | - | REV. | △ |

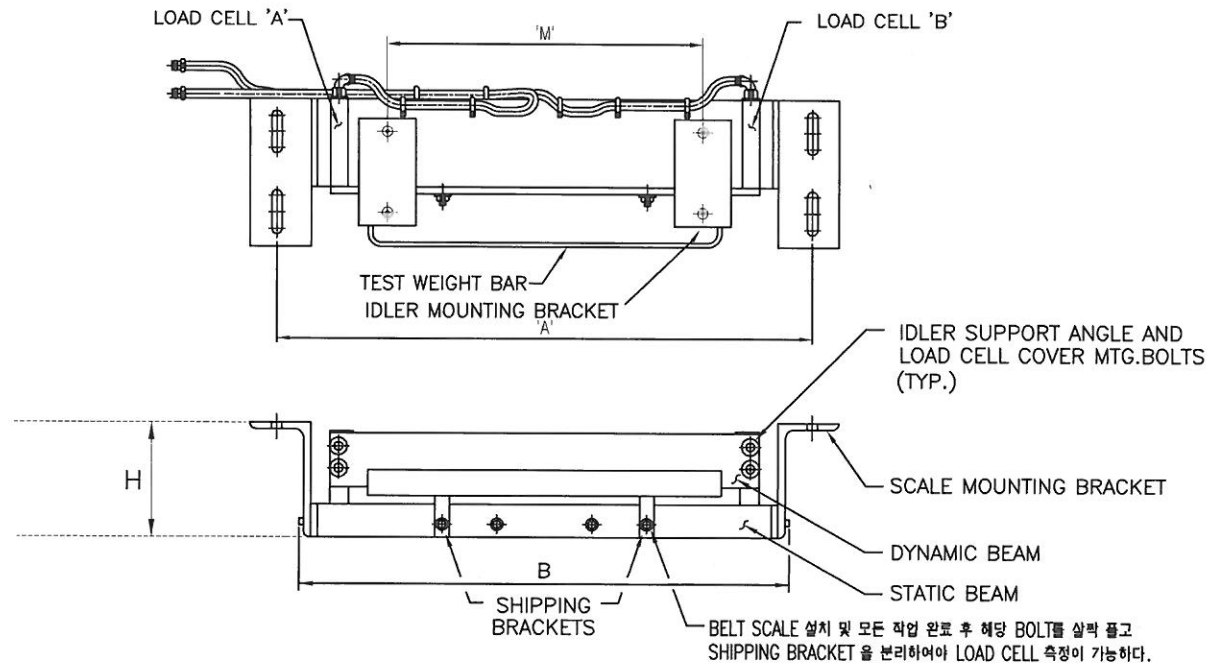
| REV. | DESCRIPTION | DATE | DESIGNED | CHECKED | REVIEWED | APPROVED |
|------|-------------|------|----------|---------|----------|----------|
| △ | | | | | | |
| △ | | | | | | |
| △ | | | | | | |
| △ | | | | | | |
| △ | | | | | | |

1 2 3 4 5 6 7 8 9 10 11

A
B
C
D
E
F
G
H

1 2 3 4 5 6 7 8 9 10 11

| NO. | DATE | REVISIONS & DESCRIPTION | SIGNATURE | |
|-----|------|-------------------------|-----------|----------|
| | | | CHECKED | REVIEWED |
| △ | - | - | | |
| △ | | | | |
| △ | | | | |



| | |
|-----------------|------------|
| BELT WIDTH (mm) | 600 ~ 1300 |
|-----------------|------------|

| | |
|-----------------|---|
| MODEL | MSI |
| ACCURACY | ±0.5% |
| MOUNTING | FOUR BOLTS TO CONVEYOR STRINGER |
| RATED OUTPUT | 2mv/v |
| HYSTERISIS | 0.02% OF RATED OUTPUT |
| NON-LINEARITY | 0.02% OF RATED OUTPUT |
| NON-REPEABILITY | 0.01% OF RATED OUTPUT |
| ENCLOSURE | CAST ALUMINUM,GROUPE,F&E,CLASS II(NAME 9) |

NOTE
1. PAINTING : MAKER STANDARD

| REV. | DESCRIPTION | DATE | DESIGNED | CHECKED | REVIEWED | APPROVED |
|------|-------------|------|----------|---------|----------|----------|
| △ | | | | | | |
| △ | | | | | | |
| △ | | | | | | |
| △ | | | | | | |
| △ | | | | | | |

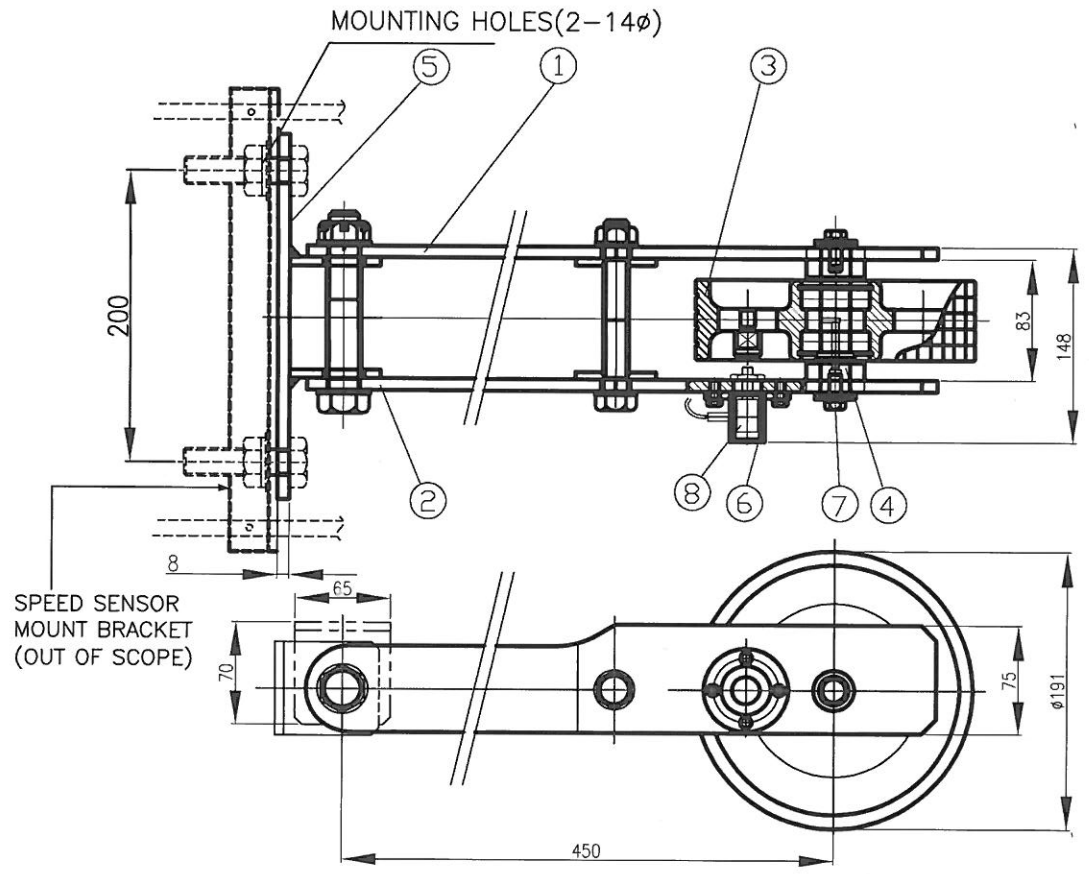
| | | | |
|--------------|----------------|----------------|------|
| CUSTOMER | - | | |
| PROJECT | - | | |
| TITLE | BELT SCALE MSI | | |
| MANUFACTURER | | | |
| SCALE | | ESP CODE | 0000 |
| | | Work Order No. | - |
| REV. | | | |

| NO. | DATE | REVISIONS & DESCRIPTION | SIGNATURE | |
|-----|------|-------------------------|-----------|----------|
| | | | CHECKED | REVIEWED |
| △ | - | - | | |
| △ | | | | |
| △ | | | | |

| NO. | DESCRIPTION | UNIT | Q'TY |
|-----|----------------------------|------|------|
| 1 | BELT SCALE PULSE GENERATOR | EA | 1 |

***SPECIFICATION**

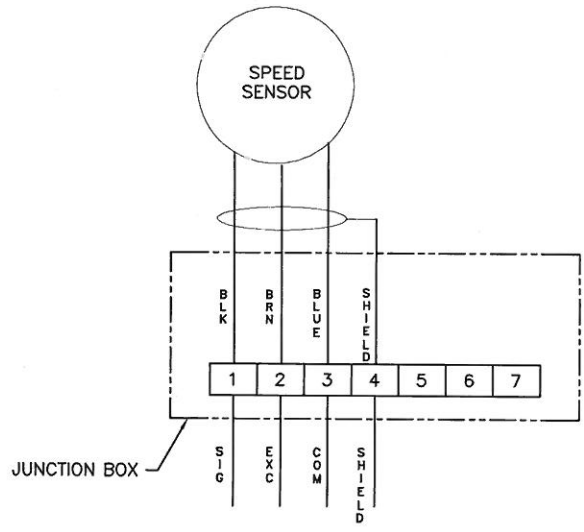
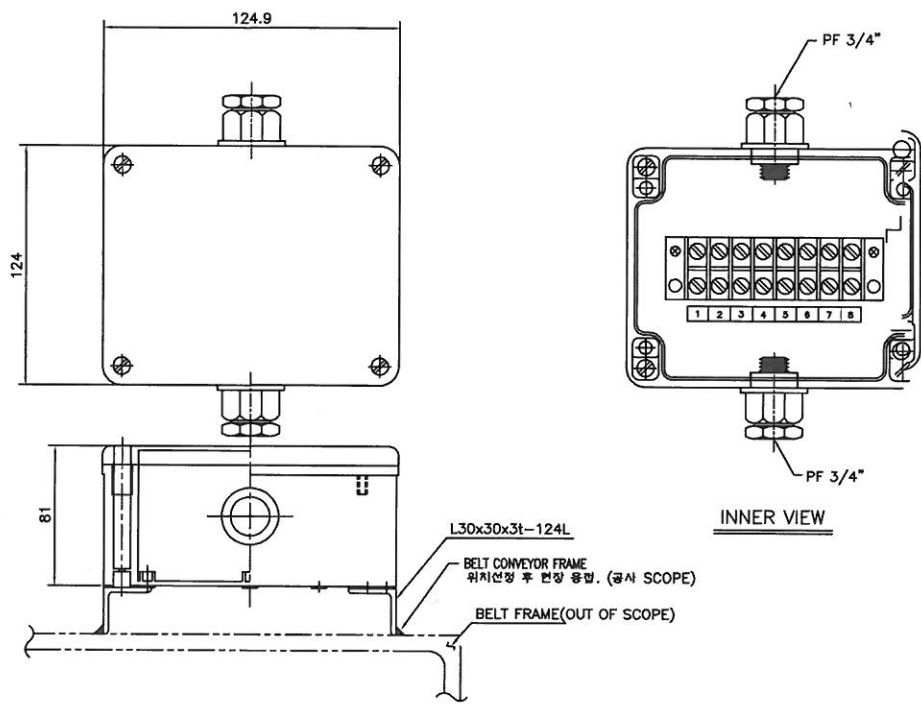
| | |
|-----------------|---------------------------|
| CABLE CONNECTOR | 1/2"NPT |
| OUTPUT | 6 PULSE per REVOLUTION |
| OPERATING TEMP' | -25 TO 70°C |
| POWER | 12 to 24VDC (10 to 30VDC) |
| MODEL | SD-36E |



| REV. | DESCRIPTION | DATE | DESIGNED | CHECKED | REVIEWED | APPROVED |
|------|-------------|------|----------|---------|----------|----------|
| △ | | | | | | |
| △ | | | | | | |
| △ | | | | | | |
| △ | | | | | | |
| △ | | | | | | |

| | | | |
|----------------|---------------------------------|----------|------|
| CUSTOMER | - | | |
| PROJECT | - | | |
| TITLE | BELT SCALE SPEED SENSOR | | |
| MANUFACTURER | SeoJin Instech Co., Ltd. | | |
| SCALE | N/S | EXP CODE | 0000 |
| Work Order No. | - | REV. | △ |

| NO. | DATE | REVISIONS & DESCRIPTION | SIGNATURE | |
|-----|------|-------------------------|-----------|----------|
| | | | CHECKED | REVIEWED |
| △ | - | - | | |
| △ | | | | |



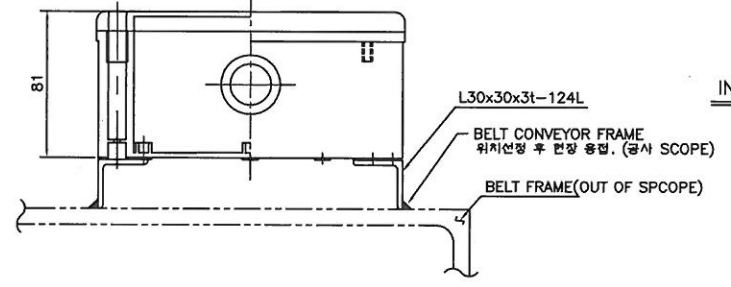
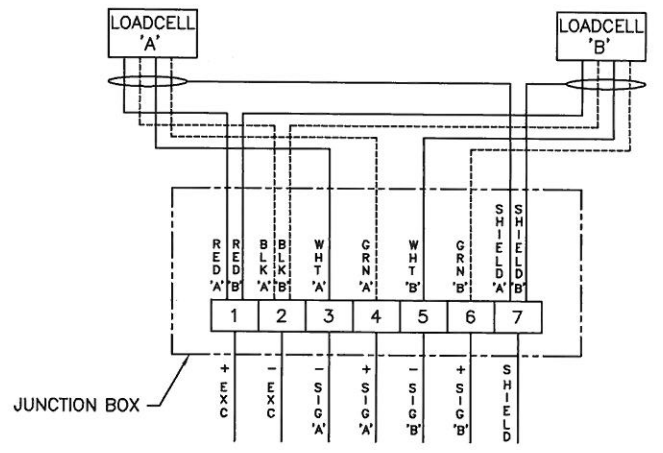
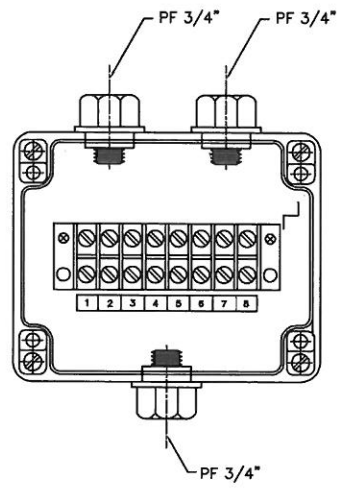
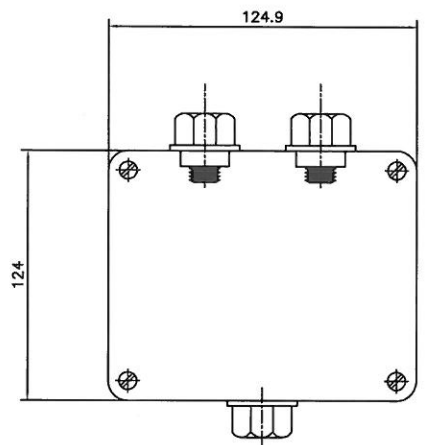
| NO. | MODEL | DESCRIPTION | UNIT | Q'TY |
|-----|--------|----------------------------|------|------|
| 1 | BXA001 | BELT SCALE PG JUNCTION BOX | EA | 1 |

NOTE
 1. CASE : MAT'L : ADC
 ENCLOSURE : IP 67
 T/B CAP' : 8P 250V 15A
 2. PAINTING : MAKER STANDARD

| REV. | DESCRIPTION | DATE | DESIGNED | CHECKED | REVIEWED | APPROVED |
|------|-------------|------|----------|---------|----------|----------|
| △ | | | | | | |
| △ | | | | | | |
| △ | | | | | | |
| △ | | | | | | |

| | | | |
|---|------------------|---------------------|-----------|
| CUSTOMER | | - | |
| PROJECT | | - | |
| TITLE SPEED SENSOR J/BOX | | | |
| MANUFACTURER SeoJin Instech Co., Ltd. | | | |
| SCALE N/S | EXP CODE 0000 | Work Order No. - | REV. △ |

| NO. | DATE | REVISIONS & DESCRIPTION | SIGNATURE | |
|-----|------|-------------------------|-----------|----------|
| | | | CHECKED | REVIEWED |
| △ | - | - | | |
| △ | | | | |



INNER VIEW

| NO. | MODEL | DESCRIPTION | UNIT | Q'TY |
|-----|----------|-----------------------------|------|------|
| 1 | BXA001-1 | BELT SCALE MSI JUNCTION BOX | EA | 1 |

NOTE

- CASE : MAT'L : ADC
ENCLOSURE : 1P 67
T/B CAP' : 8P 250V 15A
- PAINTING : MAKER STANDARD

| REV. | DESCRIPTION | DATE | DESIGNED | CHECKED | REVIEWED | APPROVED |
|------|-------------|------|----------|---------|----------|----------|
| △ | | | | | | |
| △ | | | | | | |
| △ | | | | | | |
| △ | | | | | | |

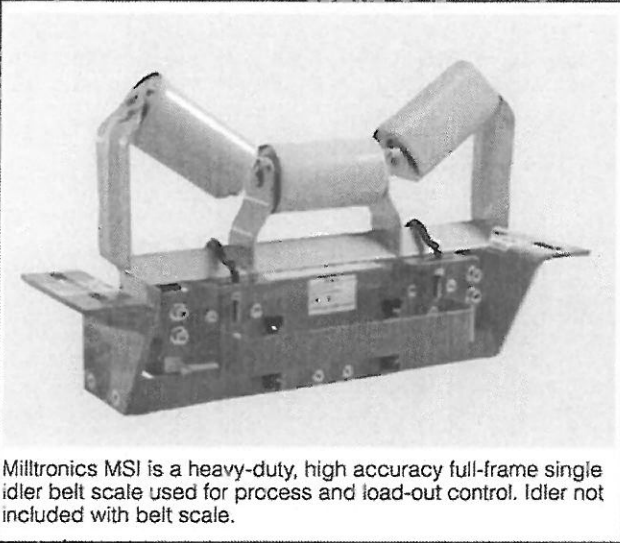
| | | | |
|--------------|----------|----------------|------|
| CUSTOMER | | - | |
| PROJECT | | - | |
| TITLE | | MSI J/BOX | |
| MANUFACTURER | | | |
| SCALE | EXP CODE | Work Order No. | REV. |
| N/S | 0000 | - | △ |

Belt Scales

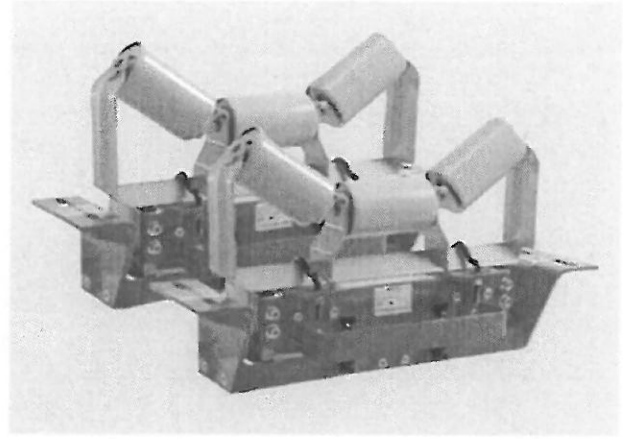
Milltronics Belt Scales

Milltronics MSI and MMI

Overview



Milltronics MSI is a heavy-duty, high accuracy full-frame single idler belt scale used for process and load-out control. Idler not included with belt scale.



Milltronics MMI is a heavy-duty, high accuracy multiple idler belt scale used for critical process and load-out control. Idler not included with belt scale.

Benefits

Milltronics MSI belt scale

- Outstanding accuracy and repeatability
- Unique parallelogram style load cell design
- Fast reaction to product loading; capable of monitoring fast moving belts
- Rugged construction
- SABS approval (South Africa), OIML, MID, and Measurement Canada

Milltronics MMI belt scale

- Exceptional accuracy and repeatability
- Unique parallelogram style load cell design
- Suitable for uneven or light product loading
- Capable of monitoring fast moving belts
- Low cost of ownership
- NTEP, OIML, MID and Measurement Canada approved

Application

Milltronics MSI belt scale

Milltronics MSI belt scale provides continuous in-line weighing on a variety of products in primary and secondary industries. It is proven in a wide range of tough applications from extraction (in mines, quarries and pits), to power generation, iron and steel, food processing and chemicals. The MSI is suitable for monitoring such diverse products as sand, flour, coal, or sugar.

The MSI's proven use of parallelogram-style load cells results in fast reaction to vertical forces, ensuring instant response to product loading. This enables it to provide outstanding accuracy and repeatability even with uneven loading and fast belt speeds.

Operating with Milltronics BW100, BW500, or SIWAREX FTC microprocessor-based integrators, the MSI provides indication of flow rate, totalized weight, belt load, and belt speed of bulk solid materials. A speed sensor monitors conveyor belt speed for input to the integrator.

The MSI is installed in a simple drop-in operation and may be secured with just four bolts. An existing idler is then attached to the MSI dynamic beam. With no moving parts, maintenance is kept to a minimum, with just periodic calibration checks required.

Milltronics MMI belt scale

Milltronics MMI belt scale consists of two or more MSI single idler belt scales installed in series. It provides high accuracy continuous in-line weighing on a variety of products in primary and secondary industries. The MMI system is proven in a wide range of tough applications from extraction to power generation, iron and steel, food processing and chemicals. The MMI is suitable for monitoring such diverse products as fertilizer, sand, grain, flour, coal, or sugar.

The MMI's proven use of parallelogram-style load cells results in fast reaction to vertical forces, ensuring instant response to product loading. This enables it to provide outstanding accuracy and repeatability even with uneven or light loading, short idler spacing and fast belt speeds. Operating with Milltronics BW500 or SIWAREX FTC integrator (for custody transfer applications), the MMI provides indication of flow rate, total weight, belt load and belt speed of bulk solids materials on a belt conveyor. A speed sensor monitors conveyor belt speed for input to the integrator.

The MMI is installed in a simple drop-in operation and may be secured with just eight bolts and existing idler sets, secured to the dynamic beam. With no moving parts, maintenance is kept to a minimum, with just periodic calibration checks required.

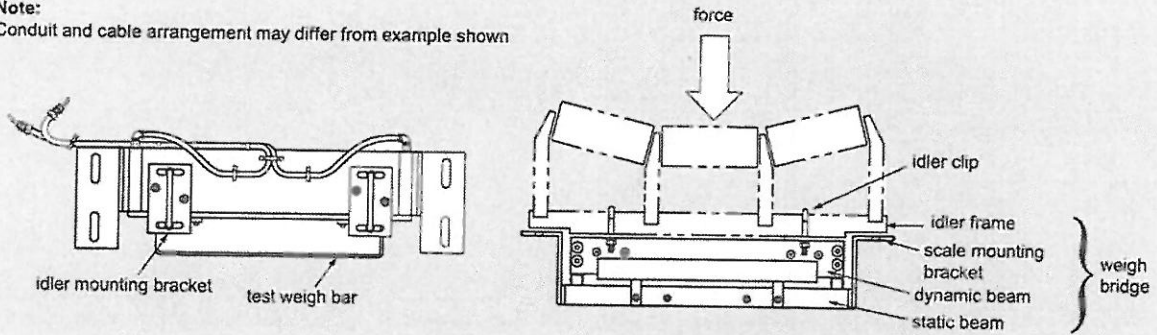


Belt Scales Milltronics Belt Scales

Milltronics MSI and MMI

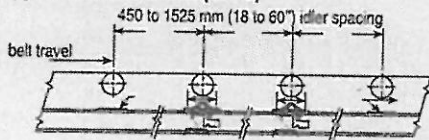
Design

Note:
Conduit and cable arrangement may differ from example shown

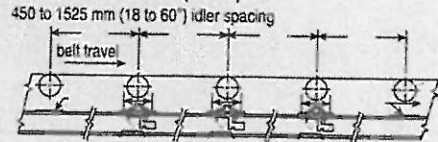


MSI/MMI mounting

Applications with 2 MSIs (MMI-2)

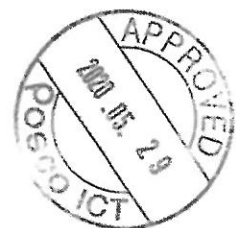


Applications with 3 MSIs (MMI-3)



Mounting (two or more MSI units), dimensions in mm (inch)

4



Belt Scales

Milltronics Belt Scales

Milltronics MSI and MMI

Technical specifications

Milltronics MSI and MMI

Mode of operation

Measuring principle Strain gauge load cells measuring load on belt conveyor idler(s)

Typical application

- MSI Control in fractionated stone blending tunnels
- MMI Custody transfer

Measurement accuracy

Accuracy¹⁾

- MSI $\pm 0.5\%$ or better of totalization over 20 ... 100 % operating range
- MMI-2 (2 idler) $\pm 0.25\%$ or better of totalization over 20 ... 100 % operating range
- MMI-3 (3 idler) $\pm 0.125\%$ or better of totalization over 25 ... 100 % operating range

Note: available with system specification option D only

Medium conditions

Material temperature -40 ... +75 °C (-40 ... +167 °F)

Belt design

- Belt width
 - 18 ... 96 inch in CEMA sizes
 - Equivalent to 500 ... 2 000 mm in metric size
 - Refer to dimensions section

Belt speed Up to 5 m/s (1 000 fpm)²⁾

Capacity Up to 12 000 t/h (13 200 STPH) at maximum belt speed. Please contact a Siemens representative for higher rates.

- Conveyor incline
 - $\pm 20^\circ$ from horizontal, fixed incline
 - Up to $\pm 30^\circ$ with reduced accuracy³⁾

Idlers

- Idler profile
 - Flat to 35°
 - Up to 45° with reduced accuracy³⁾
- Idler diameter 50 ... 180 mm (2 ... 7 inch)
- Idler spacing 0.5 ... 1.5 m (1.5 ... 5.0 ft)

Load cell

Construction 17-4 PH (1.4563) stainless steel construction with 304 (1.4301) stainless steel cover.

Degree of protection IP67, IP65 on hazardous approved models

Cable length 3 m (10 ft)
 Note: To calculate installation cable length subtract 3 048 mm (120 inch) from the "A" dimension

Excitation 10 V DC nominal, 15 V DC maximum

Output 2 ± 0.002 mV/V excitation (nominal) at rated load cell capacity

Non-linearity and hysteresis 0.02 % of rated output

Non-repeatability 0.01 % of rated output

Capacity
 • Maximum ranges 50, 100, 250, 500, 750, 1 000, 1 250, 1 500 lb

Overload 150 % of rated capacity, ultimate 300 % of rated capacity

Temperature
 • -50 ... +75 °C (-58 ... +167 °F) operating range

• -40 ... +65 °C (-40 ... +150 °F) compensated

• -10 ... +40 °C (14 ... 104 °F) compensated on trade approved versions

Weight See dimensions drawings see page 4/26

Interconnection wiring (to integrator, per MSI)
 < 150 m (500 ft) 18 AWG (0.75 mm²) 6 conductor shielded cable

> 150 m ... 300 m (500 ft ... 1 000 ft) 18 ... 22 AWG (0.75 ... 0.34 mm²), 8 conductor shielded cable

- Approvals
 - CSA/FM Class II, Div. 1, Groups E, F, G and Class III
 - ATEX II 2D Ex tD A21 IP65 T90 °C
 - GOST-R Ex
 - IECEx Ex tD A21 IP65 T90 °C
 - CE, C-TICK, GOST-R, CMC, RTN

Metrology approvals Measurement Canada, MID, OIML, SABS⁴⁾, NTEP⁵⁾

¹⁾ Accuracy subject to: On factory approved installations the belt scale system's totalized weight will be within the specified accuracy when compared to a known weighed material test sample. The test rate must be within the specified range of the design capacity and held constant for the duration of the test. The minimum material test sample must be equivalent to a sample obtained at the test flow rate for three revolutions of the belt or at least ten minutes running time, whichever is greater.

²⁾ Contact Siemens application engineering for consideration of higher belt speeds.

³⁾ Review by Siemens application engineer required.

⁴⁾ MSI only

⁵⁾ MMI only

